

ATMOCE

Data Sheet

Single-phase M-Combiner Lite MC100L



Key Features

Safety & Reliability

- IP65 design for indoor and outdoor installations
- Reliability verification in extreme scenarios
- Reinforced insulation for improved safety

High Power Capability

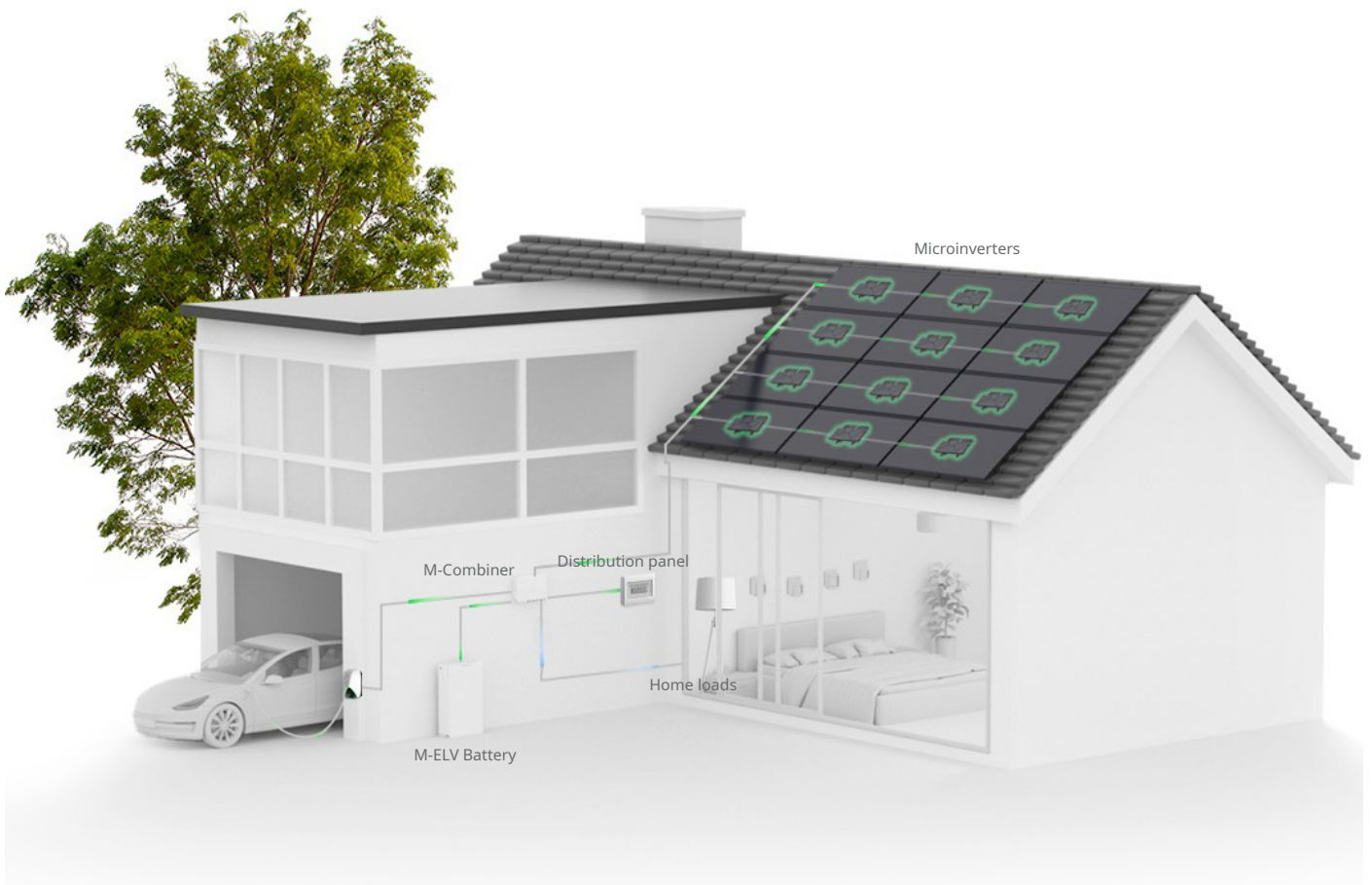
- Max. PV power of 5 kW
- Max. battery capacity of 7 kWh

Flexibility & Intelligence

- Remote management of home electricity
- Bi-directional communication between devices and Atmoce-Cloud
- All-in-one app to guide the installation and configuration

Easy Installation

- Pre-installed and pre-connected
- Easy system activation by using the Atmozen app
- Lightweight design



Items	Unit	MC100L
What's in the combiner		
M-Gateway Lite		1 × board
SPD		1 × unit, In: 20 kA, 2-pole
SPD breaker		1 × unit, 25 A, 2-pole
PV-side breaker ^a		1 × unit, 20 A, 2-pole
Grid-side breaker		1 × unit, 63 A, 2-pole, RCD 100 mA
Battery-side breaker		1 × unit, 32 A, 2-pole
Battery CT		1 × CT, accurate up to 0.1%
Consumption CT interface		1 × CT signal interface, accurate up to 0.1%
PV Relay		25A integrated relays
Electrical parameters		
Grid setup		Single-phase
Nominal voltage	V	220/230/240
Operating voltage range (L to N)	V	184 to 276
Nominal frequency	Hz	50/60
Extended frequency range	Hz	45 to 65
Max. PV branch		1
Max. PV current/branch ^b	A	20
Max. battery current	A	32
Max. battery capacity	kWh	7
Nominal CT current	A	80
AC surge protection		TYPE II
Overvoltage category		III
Nominal relay current	A	20
Max. relay current	A	25
Mechanical parameters		
Dimensions (W x H x D)	mm	337 × 237 × 99
Weight	kg	2.4
Ambient temperature range	°C	-30 to 50
Cooling		Natural convection
Enclosure environmental rating		Outdoor, IP65
Power cable sizes ^c	mm ²	PV side: 2.5 to 4 Grid side: 6 to 10 Battery side: 4 to 6
Communication cable sizes	mm ²	0.25 to 0.75
Communication		PLC, Wi-Fi, BLE, ETH, CAN
Noise	dB	<25
Altitude	m	3000
Protection class		II
Pollution degree		III

a. The standard configuration of the PV-side breaker is 20A, which can be replaced with a 25A rated circuit breaker, supporting a maximum of 5kW.

b. The capacity of the PV branch current can be increased to 25A by replacing the PV side breaker to 25A.

c. Refer to the local electrical regulations to select the cable size.

Items	Unit	MC100L
Communication interfaces		
PV side	PLC	Support
Grid side		1 × interface for consumption CT
Battery side	CAN	Support
Load side	ETH	1 × interface, 100 Mb/10 Mb auto-adaptability
Atmoce-Cloud	Wi-Fi	2.4 GHz
	ETH	1 × interface, 100 Mb/10 Mb auto-adaptability
Atmozen app	BLE	2.4 GHz
Indicators		3 × LEDs
Compliance		
Safety		IEC 61439-1/-2
Health		IEC 62311
EMC		EN 301 489-1/-17, IEC 61000-6-1/-2/-3/-4
Radio spectrum		EN 300 328
PLC		EN 50065-1/-2